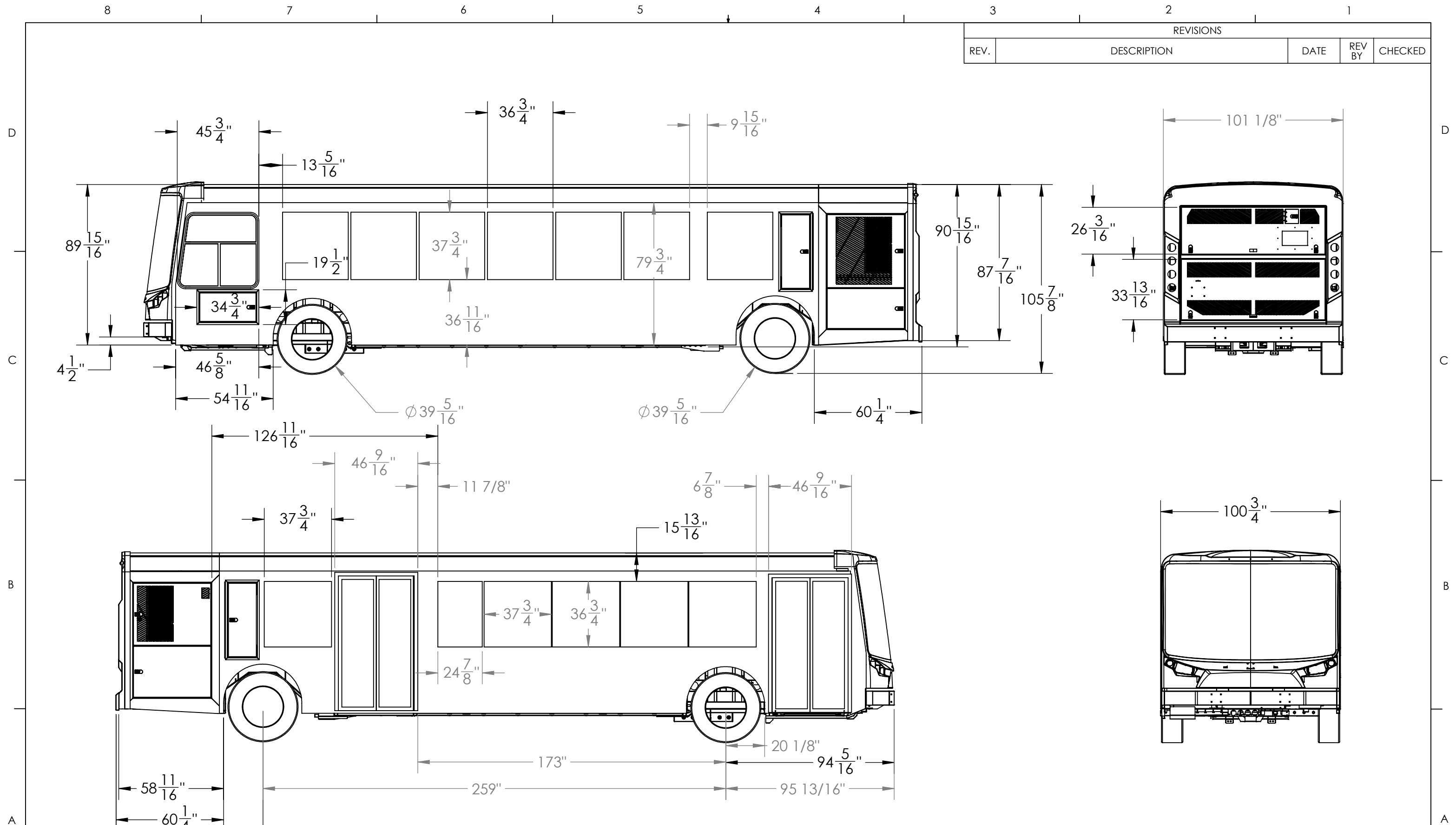


REVISIONS				
REV.	DESCRIPTION	DATE	REV BY	CHECKED



**TOLERANCES UNLESS OTHERWISE NOTED:**  
 +/- 1/8" Overall Assembly  
 +/- 1/16" Hole/Slot Location  
 +/- 0.03 Hole/Slot Size  
 +/- 1 Deg for Angle Dims

**ARBOC SPECIALTY VEHICLES** CLAIMS PROPRIETARY AND CONFIDENTIAL RIGHTS IN THE MATERIAL DISCLOSED HEREON. NEITHER THIS DRAWING NOR ANY REPRODUCTION THERE OF MAY BE USED TO MANUFACTURE ANYTHING SHOWN HEREON WITHOUT PERMISSION IN WRITING FROM **ARBOC SPECIALTY VEHICLES** TO THE USER SPECIFICALLY REFERRING TO THE DRAWINGS. INFORMATION CONTAINED HEREON MAY BE THE EXPRESS PROPERTY OF **ARBOC SPECIALTY VEHICLES** AND PROTECTED IN THE FORM OF A U.S. PATENT.

SIGNATURES/DATES	
MODELED: MSN	12/28/2021
DRAWN: MSN	12/28/2021
CHECKED:	

**ARBOC**  
SPECIALTY VEHICLES

DESCRIPTION: 35FT, DOUBLEDOOR, NARROW DOOR, CNG

DRAWING SIZE: B	SHEET: 1 OF 1	SCALE: 1:50	REV: -
-----------------	---------------	-------------	--------

MATERIAL: See BOM
FINISH WEIGHT: 9686.23 lbs
FINISH:
TITLE BLOCK FORMAT: AME-008b   TITLE BLOCK REV: B   TITLE BLOCK REV DATE: 5/18/2021